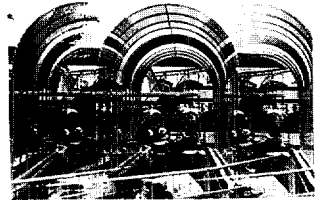
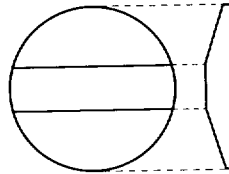


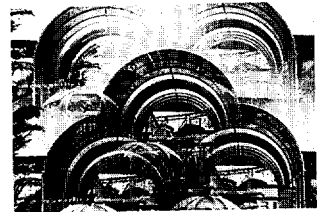
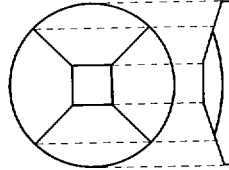
Magic Image Attachments are prism filters which fit over the lens to produce multiple images of the subject and illusory effects using different focusing techniques. Each is equipped with a rotating ring to adjust the position of the subject. They are usually used with standard lenses and are most effective with a somewhat dark background. Position of the images may also be varied somewhat and effects changed by adjusting the lens aperture.



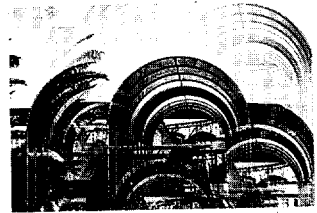
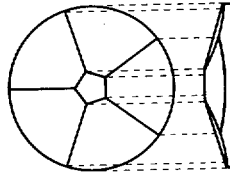
Magic Image Attachment 2C
Features two prism facets and a flat center area to give three images of the subject.



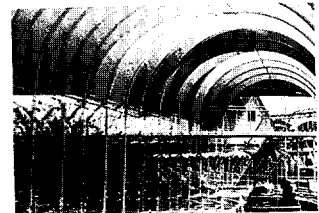
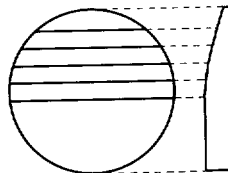
Magic Image Attachment 4C
Four prism facets and a flat center area rendering five images of the subject.



Magic Image Attachment 5C
Five prism facets with a flat center area to produce six images of the highlighted subject in the center.

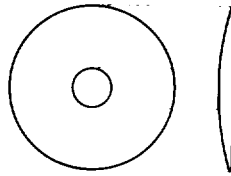


Magic Image Attachment 6M
Five parallel prism facets are arranged on an arch on one-half of the filter while the other half is flat to give six images of the subject.

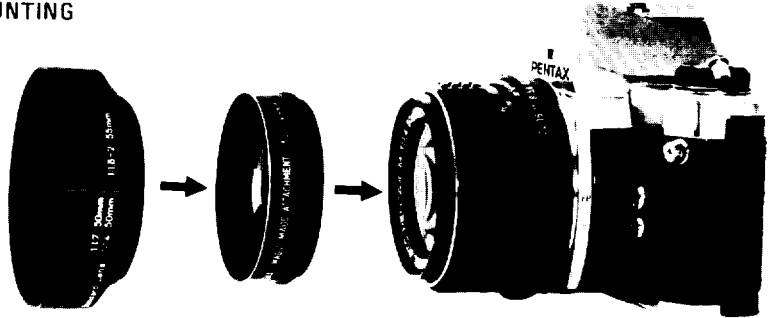


● Magic Image Attachment CF

Focus in the center of the picture area to give a sharp image of the main subject while producing a soft and hazy effect on the periphery. Useful for creating beautiful effects with portraits and nature photos, etc. Most effective when used with a standard lens; depth of focus can be varied somewhat by changing the aperture.



● METHOD OF MOUNTING



● POINTERS FOR EFFECTIVE USE

Attachments 2C, 4C, 5C and 6M are most effective with standard lenses. If used with wide-angle lenses, images will concentrate in the center of the picture and vignetting may be experienced. With telephoto lenses, they will spread out over beyond the picture area.

The 50mm macro f/4 lenses may be used with all attachments except 6M. With all lenses, do not close the aperture down too far or vignetting will be experienced. F/4 to f/5.6 is the most suitable aperture range with the above attachments. With attachment 6M the widest effective opening to use is 2.8.

A plain and dark background should be used with all filters for best results.

The CF (central focus) attachment is also most effective with a standard lens. When it is used with wide-angle lenses only a portion of the

central image comes in clear. Telephoto lenses up to 100mm, however, may be used without difficulty. The most effective aperture range is f/4 to f/5.6.

● EXPOSURE COMPENSATION

Exposure factors are not increased when using Magic Image Attachments, even when used in front of the lens of TTL metering cameras.

Exposure value with all of the attachments is 1X.

CAUTION:

● When using attachments with cameras other than 35mm SLR models, select the position of your subject directly by looking through the filter before attaching it to the lens. In this instance, test shots are recommended beforehand for better results.



ASAHI OPTICAL CO., LTD. C.P.O. 895, Tokyo 100-91, JAPAN

ASAHI OPTICAL EUROPE N.V. Weveldlaan 3-5, 1930 Zaventem, BELGIUM

PENTAX Handelsgesellschaft mbH. 2000 Hamburg 54 (Lokstedt), Grandweg 64, WEST GERMANY

ASAHI OPTICAL BRASILEIRA IND. E COM. LTDA. Rua Estados Unidos, 1053, Sao Paulo-SP, BRASIL

PENTAX CORPORATION 9 Inverness Drive East, Englewood, Colorado 80110, U.S.A.